



# 2025 Pathways to Prosperity Grant Guidelines Webinar

April 23, 2025

**Welcome!**  
**We'll get started shortly.**

# Introductions

Shannon Kisselbaugh



Executive Director

Nicole Robinson



Programs Administrator

# Webinar Housekeeping



Attendees can turn on live captions by selecting “... More” then “Language and speech” in Teams.



Introduce yourself in the chat!



The slide deck and webinar recording will be posted at [parkcommunity.com/foundation](https://parkcommunity.com/foundation) and emailed to webinar registrants



Submit your questions in the chat

# About Park Community Credit Union Foundation

- Vision: To build a more vibrant community where everyone has equitable access to learn, grow and thrive
- Charitable arm of Park Community Credit Union
- 501(c)(3) public charity
- Over \$600,000 contributed to causes and charitable initiatives since 2019









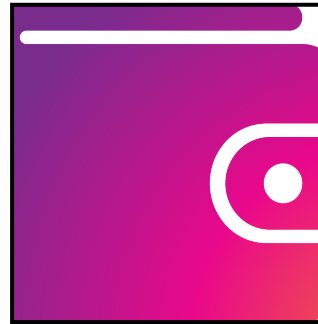
## 2025 Pathways to Prosperity Grant Opportunity

- Maximum request amount is \$10,000 per application, no minimum
- Organizations can submit ONE application but may select more than one Impact Area
- Pathways to Prosperity grant projects must align with one or more of the Impact Areas to be eligible.
- Applicants do not have to be a member of Park Community Credit Union

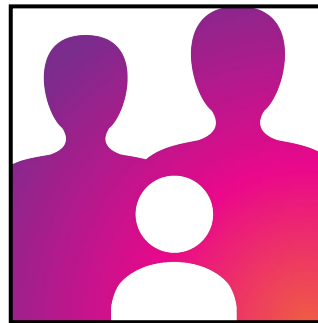
# Funding Impact Areas



**Education** – Post-secondary and vocational school scholarship funding to support future leaders and a more skilled workforce.



**Financial Wellbeing** – Financial education and resources to promote individual and family stability and sustainability.



**Thriving Communities** – Transformative and critical community projects that contribute to a higher quality of life for our members and neighbors, and a more competitive region economically.

Projects must serve one or more of the following counties:

<b>Kentucky</b>	
<b>Bullitt</b>	<b>Lincoln</b>
<b>Casey</b>	<b>Madison</b>
<b>Estill</b>	<b>Menifee</b>
<b>Fayette</b>	<b>Montgomery</b>
<b>Garrard</b>	<b>Owsley</b>
<b>Hardin</b>	<b>Powell</b>
<b>Jackson</b>	<b>Pulaski</b>
<b>Jefferson</b>	<b>Rockcastle</b>
<b>Laurel</b>	<b>Wolfe</b>
<b>Lee</b>	

<b>Indiana</b>	
<b>Clark</b>	<b>Floyd</b>





---

# Grant Guidelines

- The grant guidelines can be found on the [webinar registration page](#), on the online application [welcome page](#), and on the [Foundation webpage](#).
- Must be a 501(c)(3) public charity that is IRS Publication 78 verified.
- IRS Tax-Exempt Organization Search - <https://apps.irs.gov/app/eos/>
- Private foundations and organizations that are included on the Office of Foreign Assets Control (OFAC) Specially Designated National (SDN) list are not eligible.
- If your organization is currently having issues with their IRS status, this must be resolved by May 16. If it is not, your application will be ineligible.



---

# Grant Guidelines Continued

- If you have questions about your organization's exempt status and eligibility, please contact us.
- Organizations must have an effective date of exemption on their IRS Determination Letter that is on or before April 21, 2023.
- Organizations that have been in operation less than 2 years are not eligible.
- Grant applications are ONLY accepted via the online grant application link.



2025 Pathways to Prosperity Grant  
Application QR Code

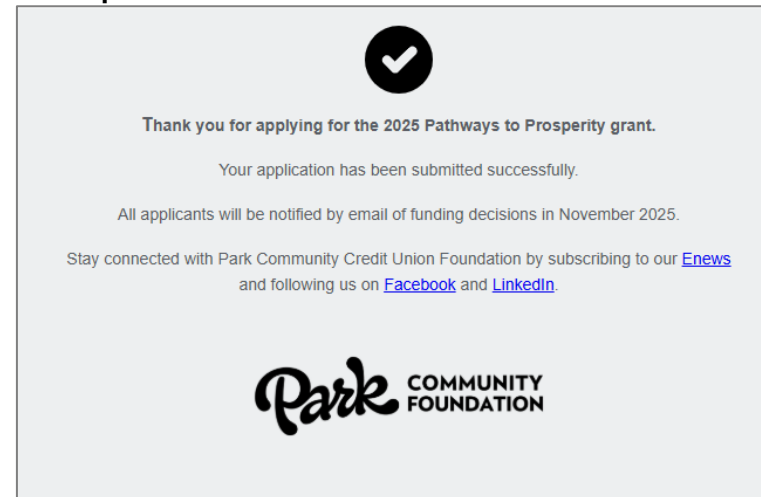
[https://parkcommunityfoundation.formstack.com/forms/pathways\\_to\\_prosperity\\_grant\\_application\\_2025](https://parkcommunityfoundation.formstack.com/forms/pathways_to_prosperity_grant_application_2025)



---

# Grant Guidelines Continued

- Deadline: Friday, May 16, 2025, at 5:00 PM EDT
- After an application is submitted the online system will provide a submission screen



- Additionally, the email supplied in the application as the "Contact Person Email" will receive a submission email confirmation with a copy of the submitted responses



---

# Application Requirements

- The organization's IRS Determination Letter is required for submission.
- Max file size is 15 MB
- Upload file types allowed: jpg, jpeg, gif, png, tif, pdf, doc, docx, csv, xls, xlsx, txt, zip
- Partial or incomplete applications at the time the application closes will be ineligible.



---

## We will NOT fund

- Individuals (applicants must be a 501(c)(3) public charity)
- Lobbying or political campaigns
- Projects that promote a particular religion
- Events and sponsorships such as galas, run/walks, golf scrambles, etc
- Organizations that discriminate based on race, color, religion, sex, sexual orientation, gender identity or expression, national origin or ancestry, citizenship, age, physical or mental disability, pregnancy, veteran's status, parental status, marital status, genetic disposition, or any other characteristic protected by federal, state, or local law.



---

## Review Process

- Grants are scored by the Advisory Grants Committee and recommended to the Foundation's Board of Directors for approval
- Foundation staff do not score the grant applications
- Foundation staff check for IRS compliance and that applications are complete and received by the deadline



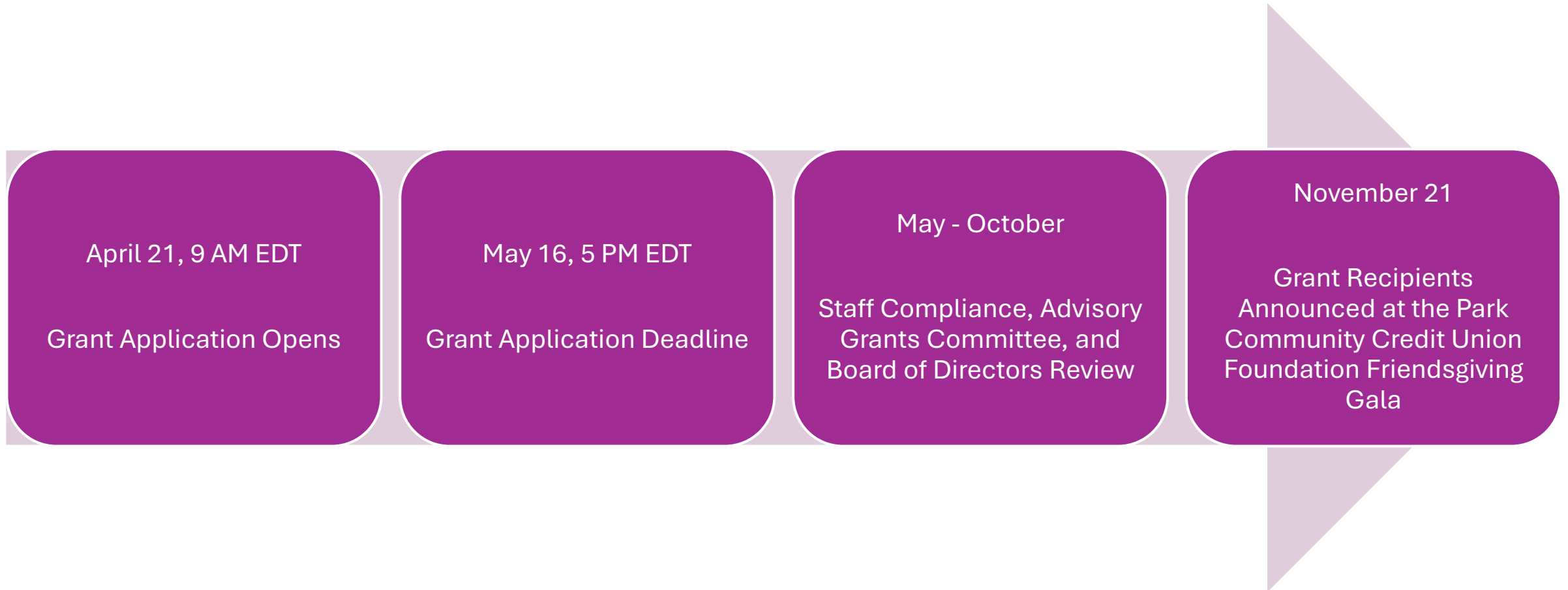


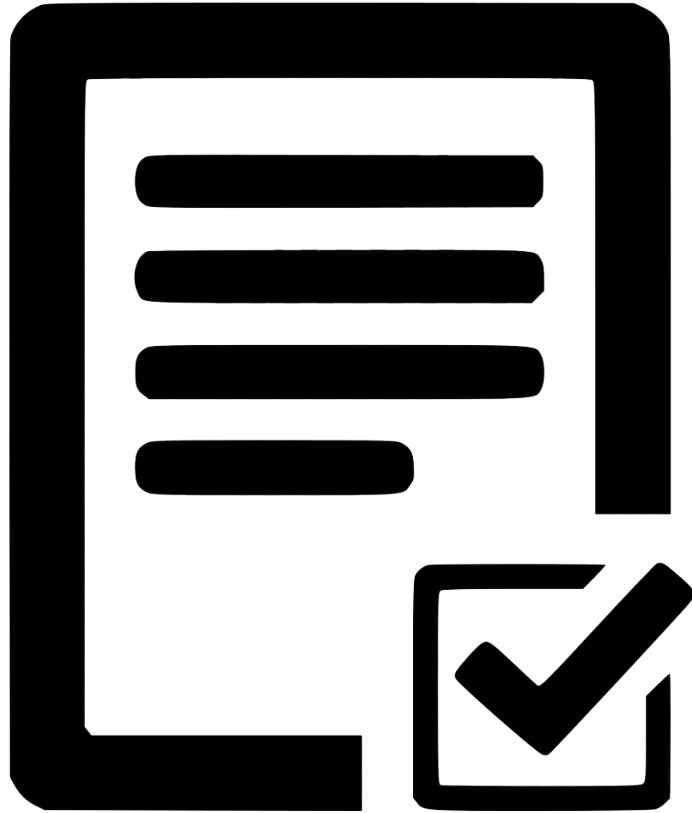
---

## SMART Goals

- How to write SMART goals by Indeed:  
<https://www.indeed.com/career-advice/career-development/smart-goals-for-grant>

# Timeline





# Online application walk through



2025 Pathways to Prosperity  
Grant Application QR Code

Online application link can be found  
on our webpage here:

[parkcommunity.com/foundation](https://parkcommunity.com/foundation)



# Grant Training Resources

- Louisville Metro Grant Writing Tips Webinar (free)
  - Recording and slides available at <https://louisvilleky.gov/government/external-agency-fund>
- Grant Ready Kentucky (fees may apply)
  - <https://www.grantreadyky.org/>
- Center for Nonprofit Excellence Trainings (fees may apply)
  - <https://www.cnpe.org/>
- Kentucky Nonprofit Network (fees may apply)
  - <https://kynonprofits.org/>
- Grant Professionals Association (fees may apply)
  - <https://grantprofessionals.org/page/granttips>



# Other Opportunities at Park Community Credit Union

- Park Community Credit Union now offers a Community Money Market Account for nonprofits.
- For more info, visit <https://parkcommunity.com/community-account-contact-form/> or call 502.968.3681

*\*Pathways to Prosperity applicants do not have to be a Park Community Credit Union member to be eligible to apply for the grant.*

# 2025 Pathways to Prosperity Open Office Hours

Session 1	Session 2	Session 3	Session 4
Friday, April 25	Wednesday, April 30	Wednesday, May 7	Wednesday, May 14
11:00 AM – 12:30 PM EDT	1:00 PM – 2:30 PM EDT	10:00 AM – 11:30 AM EDT	2:00 PM – 3:30 PM EDT

## Microsoft Teams Link:

[https://teams.microsoft.com/l/meetup-join/19:meeting\\_YTlkMDNiMGQtNzY4Yy00MDc5LTg5Y2YtZDg0ZTI1N2Y3NDE4@thread.v2/0?context=%7B%22id%22:%2247cae334-b3e0-4d26-8654-c00e85a1b5a2%22,%22oid%22:%224aa22053-5fcf-4d74-adf4-6ed3ed3d7f04%22%7D](https://teams.microsoft.com/l/meetup-join/19:meeting_YTlkMDNiMGQtNzY4Yy00MDc5LTg5Y2YtZDg0ZTI1N2Y3NDE4@thread.v2/0?context=%7B%22id%22:%2247cae334-b3e0-4d26-8654-c00e85a1b5a2%22,%22oid%22:%224aa22053-5fcf-4d74-adf4-6ed3ed3d7f04%22%7D)

Meeting ID: 227 443 170 604 0

Passcode: 4M5Pf3iU





---

# Questions?

## Contact Us



[foundation@parkcommunity.com](mailto:foundation@parkcommunity.com)



<https://parkcommunity.com/foundation/>



**502.815.7393**

## Follow Us

